

Gender equality entails not only providing equal opportunities, conditions and treatment for groups of different genders to ensure that they may develop their potential and use their resources in a meaningful way,¹ but also ensuring de facto equality in results or that groups of different genders enjoy their rights in an equal way.² This de facto or substantive equality is a fundamental human right, and one of the main preconditions for sustainable development. Gender equality is strongly interdependent with the risks related to climate change (C), disaster risks (D) and environmental degradation (E), which are also some of the most pressing challenges related to sustainable development.

This thematic integration brief provides a non-exhaustive compilation of the interrelations between gender inequality and C/D/E. The brief:

- enhances the understanding of potential risks of C/D/E related to gender
- highlights the benefits of gender equality for C/D/E
- offers practical advice on how to integrate C/D/E and gender programming.

1 UNICEF, [Gender Equality: Glossary of Terms and Concepts](#), 2017.

2 UN Committee on the Elimination of Discrimination Against Women (CEDAW), [General recommendation No. 25, on article 4, paragraph 1, of the Convention on the Elimination of All Forms of Discrimination against Women, on temporary special measures](#), 2004.

Interconnections at a Glance



Risks of C/D/E for gender equality

- Women are more exposed to **health effects** caused by C/D/E risks. During a disaster caused by natural hazards, the death rates of women and children are up to 14 times higher than those of men.
- Women are at risk of facing higher levels of **gender-based violence** during a disaster and its aftermath. Following hurricane Maria in Puerto Rico in 2017, for example, requests for services related to gender-based violence rose by 62%.
- Women are often **excluded from decision-making positions and processes** related to C/D/E risks. 67% of climate-related decision-making roles are filled by men. In 2020, only 12% of national environment ministries globally were headed by women.
- Programmes and actions to address C/D/E risks are likely to **contribute to more gender inequality** if they are not planned and implemented in a gender responsive, or at least a gender sensitive, way.



Benefits of gender equality for C/D/E

- Women's empowerment strengthens their **adaptation and mitigation capacities**.
- Higher levels of gender equality can contribute to **more effective, targeted and sustainable** climate and environmental action in general. The inclusion of differentiated perceptions of risk (due to different exposure, vulnerability and coping strategies) leads to better risk management decisions.
- A higher level of inclusion of women and girls in decision-making positions correlates with lower levels of carbon dioxide emissions and **better climate policies**.
- Making use of the thorough **knowledge and understanding of natural resources** and the environment that many women possess contributes to better C/D/E.
- When women's **perspectives inform disaster risk management and reduction efforts**, ultimately everyone benefits.

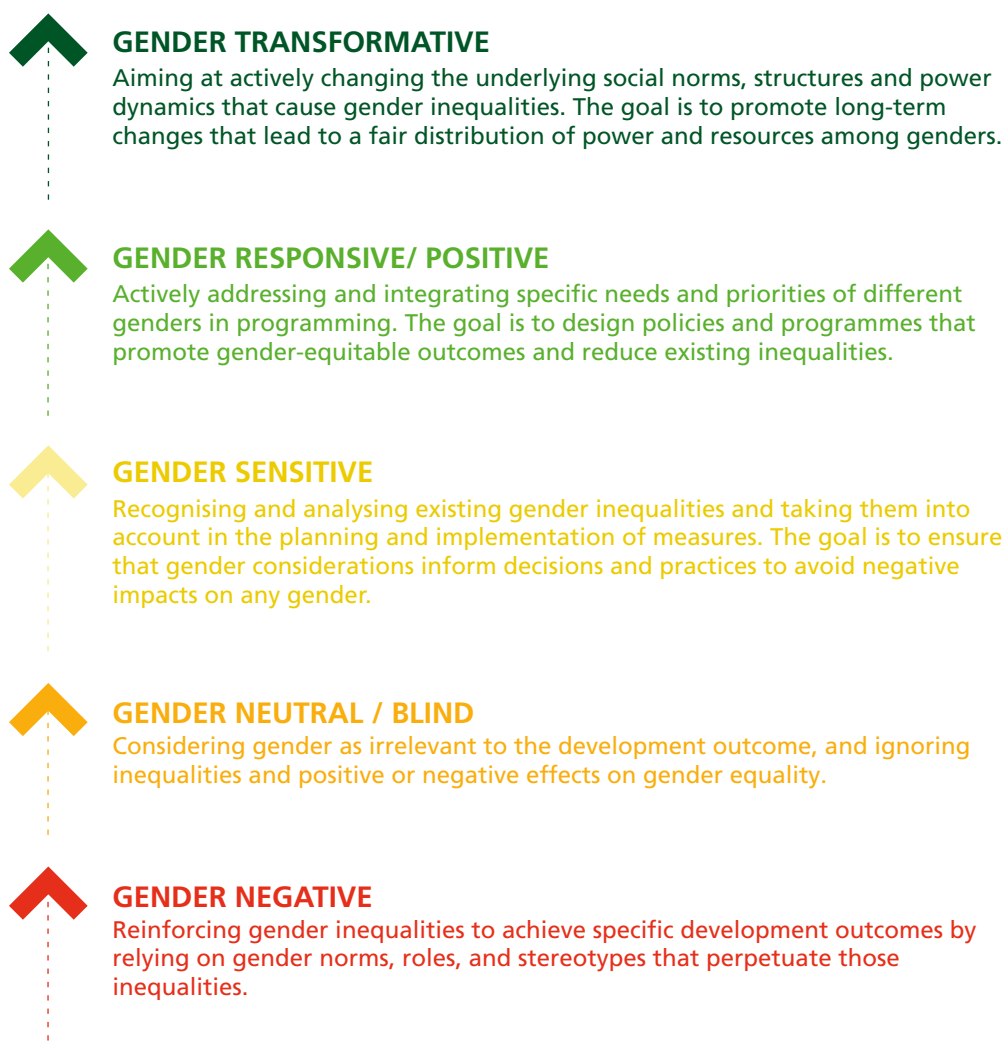
1. Gender equality at the SDC

Gender equality refers to the state in which individuals, regardless of their gender, have equal rights, opportunities, and access to resources, and are treated with the same level of respect and dignity.

Patriarchal gender norms result in various forms of discrimination, and gender inequality often overlaps with other structural inequalities – such as those based on disability, class, race, religion, or sexuality – to create multiple forms of discrimination between and within social groups.³

Projects and programmes in international cooperation can operate at different levels with regard to gender equality. Figure 1 identifies the terms used to represent these levels.⁴ The SDC strives for gender transformative action.⁵

Figure 1: Levels of gender equality in programming



3 FEPS/Friedrich Ebert Stiftung, [Climate Mainstreaming: Climate and Gender Policy](#), Policy Brief, February 2023; SDC, [SDC Guidance: Leave No One Behind](#), 2018.

4 Based on the [UN Women Training Centre's Glossary](#).

5 SDC, [Status Report on Gender Equality 2019. Striving for Transformative Change](#), 2019.

2. Interactions between gender equality and C/D/E



Risks of C/D/E for gender equality

As a multiplier of existing gender inequalities and vulnerabilities, C/D/E risks jeopardise – and may reverse – development gains for all people, but especially for women and girls.⁶

Health and protection

- Women and girls face discrimination on various levels in many countries, and are therefore **more vulnerable when experiencing extreme weather events**. Research has found that they are up to 14 times more likely to die in disasters than men.⁷
- Women often **lack access to early warning systems** or targeted evacuation schemes.⁸ Their traditional role as caretakers and protectors of assets can inhibit them leaving the house to find shelter in an emergency as can cultural norms such as those regarding clothing.⁹ Furthermore, evacuation and shelter systems may lack hygiene facilities for women and increase the risk of assault and gender-based violence.¹⁰
- Women are more likely to face a higher risk of suffering from **post-traumatic stress disorder, depression and emotional distress** after extreme weather events. This psychosocial impact is related to women's position in society and their higher exposure to physical health risks caused by C/D/E.¹¹
- Changing climate conditions, such as rising temperatures and increased humidity due to heavy rainfall, increase the spread of **vector-borne diseases**, such as dengue fever, Zika virus or malaria. These diseases can seriously impact **women's health in general, as well as their reproductive and maternal health**.¹² Furthermore, due to their overrepresentation in the health and care sectors, women are more at risk of contracting communicable diseases.¹³
- Women are at a higher risk of **food insecurity**, which also affects their health. When harsh climatic conditions lead to crop failure, for example, cultural dynamics often facilitate men's departure from their farms to pursue employment opportunities elsewhere, leaving women to bear the burden of feeding their families and managing household expenses alone.¹⁴
- **Air pollution**, which is a serious health issue for the whole population, also particularly affects women. Indoor air pollution due to inefficient cook stoves or open wood fires mainly affects women due to their attributed responsibilities in the house.¹⁵ Outside, women are more likely to work in polluted areas, such as markets on busy roads, and are overrepresented in the informal economy.¹⁶ Breathing in pollutants is linked to worsening maternal health and increasing rates of pregnancy complications and loss.¹⁷ Exposure to air pollution also increases the risk of breast cancer and heart disease.¹⁸
- Risks of **gender-based violence** and sexual exploitation increase after a disaster and in emergency settings. The increased risk of violence in **emergency shelters and in refugee and displacement camps** is due to insufficient protection of women and lack of consideration for their particular needs.¹⁹ In addition, changing roles and responsibilities within families might cause crises of masculinity²⁰ that can lead to increased violence within **households**.

6 Dupar, M. and Velasco, P., [Advancing gender equality and climate action: A practical guide to setting targets and monitoring progress](#), 2021; SDC, [Guidance Sheet: Gender, Climate Change and Disaster Risk Reduction](#), 2019.

7 World Bank, [Climate change and gender-based violence – interlinked crises in East Africa](#), 2022.

8 Anticipation Hub, [Mitigating gender-based violence risks: how anticipatory action supports safety and access to services for women and girls](#), 2021.

9 UNEP, [Women at the frontline of climate change: gender risks and hopes](#), 2011.

10 Dunne, D., How climate change disproportionately affects women's health, 2020; Anticipation Hub, [Mitigating gender-based violence risks: how anticipatory action supports safety and access to services for women and girls](#), 2021; Global Gender and Climate Alliance, [Gender and Climate Change: A closer Look at Existing Evidence](#), 2016.

11 EU: [Thematic Brief: Gender, climate change, disaster risk reduction](#)

12 UN Foundation, [5 Facts about Gender Equality and Climate Change](#), 2022; IPCC, [Health, Wellbeing and the Changing Structure of Communities](#), 2022.

13 World Health Organization, [Value gender and equity in the global health workforce](#), 2024.

14 UNDP, [Gender, climate change and food security](#), 2016.

15 WHO, [Household air pollution](#), 2023.

16 Hariparsad, S. and Naidoo, R. N., [The effects of occupational pollutants on the reproductive health of female informal street traders in Warwick junction, Durban, South Africa – a cross-sectional study](#), BMC Women's Health, 19, 163, 2019.

17 International Energy Agency, [Access to clean cooking](#), 2024; Xue, T. et al., [Estimation of pregnancy losses attributable to exposure to ambient fine particles in south Asia: an epidemiological case-control study](#), 2021.

18 DePolo, J., [Long-Term Exposure to Fine-Particle Air Pollution Increases Breast Cancer Risk](#), 2023; Miller, K. A. et al., [Long-Term Exposure to Air Pollution and Incidence of Cardiovascular Events in Women](#), The New England Journal of Medicine 2007(365): 447-458, 2007.

19 IBRD & World Bank, [Gender Dimensions of Disaster Risk and Resilience](#), 2021.

20 *ibid*

Economic resilience and poverty

- Women are generally more affected by poverty than men, and the increase in poverty caused by C/D/E risks (both through short- and long-term effects) similarly affects women more.²¹
- Women often lack access to **financial services, insurance schemes, and credit**,²² so their financial assets are not as well protected as those of men and they have a lower **capacity to prepare for, react to, and recover from disasters**.²³
- Women usually carry the **domestic and care burden**, which tends to increase after a disaster. Hence, they often miss out on other income-generating activities.²⁴
- Climate change, disasters and environmental degradation threaten global progress towards development, poverty reduction, and economic and political stability and can have – in combination with other factors – multiple secondary effects, such as migration and displacement. While climate change may force up to 216 million people to migrate by 2050,²⁵ due to their caregiving obligations and lack of access to financial resources, **women tend to stay behind**,²⁶ thus further increasing their risks. New economic activities, such as renewable energy projects that require relocation, are often more accessible to men than to women. When women do decide to migrate, the **risk of unsafe living conditions**, poverty, and exposure to violence is particularly high.²⁷
- **Female farmers** account for around 60–80% of food production in most developing countries.²⁸ In many countries, agri-food systems serve as a more significant source of employment for women than for men. In sub-Saharan Africa,

66% of women are employed in agri-food-related jobs, compared to 60% of men. In southern Asia, the gap is even wider – 71% of women and 47% of men in the workforce are engaged in agri-food systems.²⁹ Any C/D/E strain on agricultural and food systems can thus have particularly severe effects on women's livelihoods and food security.³⁰

Decision-making and outreach

- Women are often **excluded from decision-making processes** related to C/D/E risks. 67% of climate-related decision-making roles are filled by men.³¹ In 2020, only 12% of national environment ministries globally were headed by women.³²
- The exclusion women from decision-making increases the risk that C/D/E policies and strategies will inadequately reflect the needs and conditions of half the population, and may lead to **gender-blind policies and strategies** that exacerbate existing inequalities. Studies show that there are sustainability-related advantages of having women participate in decision-making on C/D/E.³³
- Environmental human rights defenders often experience **violence** as an attempt to undermine and silence their voice. While men are more often victims of murder, women are often victims of gender-based violence based on misogyny and discriminative gender norms.³⁴
- Only 3% of philanthropic environmental funding is directed to women's and girls' environmental activism,³⁵ and women face high difficulties in accessing climate finance.³⁶

21 SDC, [Guidance Sheet: Gender, Climate Change and Disaster Risk Reduction](#), 2019.

22 Women's World Banking, [Global Findex 2021: Women's World Banking Response](#), 2022.

23 IBRD & World Bank, [Gender Dimensions of Disaster Risk and Resilience](#), 2021; UN Women, [Accelerating action for gender responsive disaster risk reduction](#), 2023.

24 IBRD & World Bank, [Gender Dimensions of Disaster Risk and Resilience](#), 2021.

25 Clement, V. et al., [Groundswell Part 2: Acting on Internal Climate Migration](#), 2021.

26 Migration Data Portal, [Women and girls on the move](#), 2025.

27 Sida, [Gender Equality, Environment & Climate Change](#), 2021.

28 Davies, R., [Women produce up to 80% of food in developing countries](#), 2023.

29 FAO, [The status of women in agri-food systems](#), 2023.

30 EU: [Thematic Brief: Gender, climate change, disaster risk reduction](#); UN Women, [Accelerating action for gender responsive disaster risk reduction](#), 2023.

31 UN Women, [Claiming women's space in leadership](#), 2021.

32 OECD, [The Gender Equality and Environment Intersection: An overview of development co-operation frameworks and financing](#), 2023.

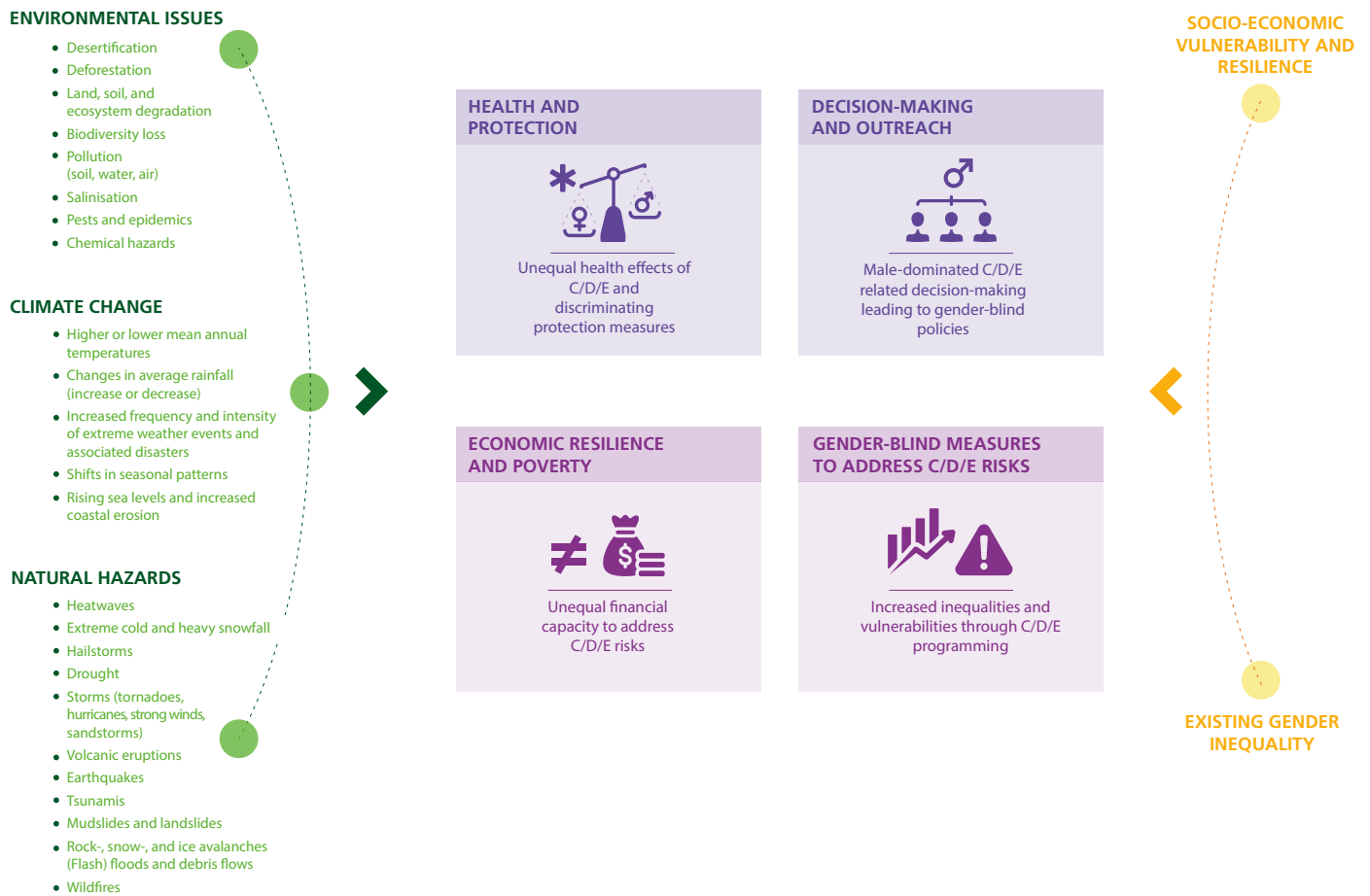
33 UNDP & UN Women, [Gender Equality as an Accelerator for Achieving the SDGs](#), 2019; Ergas, C. and R. York, [Women's status and carbon dioxide emissions: a quantitative cross-national analysis](#). *Social Science Research* 41(4): 965–976, 2012; Norgaard, K. and York, R., [Gender equality and state environmentalism](#). *Gender and Society* 19(4): 506–522, 2005; Pinho-Gomes, A.C. and Woodward, M., [The association between gender equality and climate adaptation across the globe](#). *BMC Public Health* 24, 1394, 2023; Nugent, C. and Shandra, J., [State environmental protection efforts, women's status, and world polity: a cross-national analysis](#). *Organization and Environment* 22(2): 208–229, 2009.

34 IUCN, [Women Environmental Human Rights Defenders: Facing gender-based violence in defense of land, natural resources and human rights](#), 2020.

35 Forum Generation Equality, [Feminist Action for Climate Justice: Action Coalition](#), 2021.

36 Chiu, B., [COP26 Vows To Change The Sexist Climate Finance System](#), 2021.

Figure 2: Risks of C/D/E for gender equality



Gender-blind measures to address C/D/E risks

- In addition to C/D/E risks posing a threat to gender equality, programmes and actions to address these risks are also likely to **contribute to more gender inequality** if they are not planned and implemented in a gender responsive or, at the very least, gender sensitive way.
- Energy transition programmes risk reinforcing the gendered division of labour by providing alternative employment to men while leaving the care work to women.³⁷ This division of labour causes greater exposure to poverty in women of working age and after retirement.³⁸
- Mitigation measures, such as carbon taxes, can aggravate economic inequalities and put a further strain on the poor,

among whom women and minorities are disproportionately represented.³⁹

While C/D/E risks exacerbate existing patterns of gender inequality at various levels, these risks might indirectly contribute to more gender equality. Extreme events, emergencies or shocks, for example, could disrupt existing power structures and provide windows of opportunity for change. Such situations could present the opportunity to renegotiate resource management systems and power relations, and could result in more equitable access and control regimes. The precondition for such a change is, however, that patriarchal and discriminatory power relations are identified and deliberately addressed.

37 Currently, there are on average 76% fewer women working in the energy sector than men; International Energy Agency, [Gender and Energy Data Explorer](#), 2023.

38 UN Women, [Gender Equality in the Sustainable Energy Transition](#), 2023.

39 FEPS/Friedrich Ebert Stiftung, [Climate Mainstreaming: Climate and Gender Policy. Policy Brief](#), February 2023

Benefits of gender equality for C/D/E



The particular vulnerability of women to the impacts of C/D/E risks is exacerbated when women are considered victims rather than key actors with practical skills and critical knowledge to counter the effects of C/D/E risks.⁴⁰ An increase in gender equality through the inclusion and development of these skills and knowledge, can present important opportunities to make progress on climate change mitigation and adaptation, disaster risk reduction and environmental protection – not only for women, but for whole societies.

Increasing adaptation and mitigation capacity

- Gender inequality correlates with unequal access to education and information for women. Consequently, women may be less able to face climate related risks. Empowering women and strengthening their climate-related knowledge would increase their – and hence 50% of the population’s – **capacity to mitigate or adapt** to climate change.
- Higher levels of gender equality tend to correlate with lower levels of climate vulnerability and higher levels of climate action in a country. This implies that improvements in gender equality – through improved healthcare, education, or representation in decision-making, for example – can **strengthen the adaptive capacity of women and whole societies**.⁴¹

More sustainable and inclusive C/D/E policies and outcomes

- Women have more sustainable consumption patterns, they are more willing to improve their energy-related behaviour than men, and they are more aware of and concerned about climate change.⁴² Gender equality, including a higher proportion of women in political decision-making processes and institutions, correlates with fewer **CO₂ emissions, more land protection, better climate adaptation and a higher probability of ratifying environmental treaties**.⁴³ These findings could be explained by female politicians’ preferences being aligned with female preferences in general, leading to a higher priority given to climate action.⁴⁴
- Similar observations relate to women’s roles in companies: companies with more than 30% female board members tend to have better climate governance and hence experience an emissions growth rate of only 0.6% compared to 3.5% for the rest of the companies.⁴⁵
- These findings imply that full and meaningful participation of women and girls in consultations and decision-making processes ensure that solutions to address C/D/E issues are effective and **benefit the whole of society**.⁴⁶

40 UN Women: [Why is Climate Change a Gender Issue?](#)

41 Andrijevic, M., et al., [Overcoming gender inequality for climate resilient development](#), Nature Communications 11, 6261, 2020; Tandon, A., [Tackling gender inequality is ‘crucial’ for climate adaptation](#), 2020.

42 Ballew, M. et al., [Gender Differences in Public Understanding of Climate Change](#), Yale Program on Climate Change Communication, 2018; European Institute for Gender Equality, [Gender Equality and Climate Change: Report](#), 2012.

43 UNDP & UN Women, [Gender Equality as an Accelerator for Achieving the SDGs](#), 2019; Ergas, C. and R. York, [Women’s status and carbon dioxide emissions: a quantitative cross-national analysis](#), Social Science Research 41(4): 965–976, 2012; Norgaard, K. and York, R., [Gender equality and state environmentalism](#), Gender and Society 19(4): 506–522, 2005; Pinho-Gomes, A.C. and Woodward, M., [The association between gender equality and climate adaptation across the globe](#), BMC Public Health 24, 1394, 2023; Nugent, C. and Shandra, J., [State environmental protection efforts, women’s status, and world polity: a cross-national analysis](#), Organization and Environment 22(2): 208–229, 2009.

44 Mavisakalyan, A. & Tarverdi, Y., [Gender and climate change: Do female parliamentarians make difference?](#) European Journal of Political Economy, Elsevier, vol. 56(C), pages 151-164, 2019.

45 Sasakawa Peace Foundation, [Gender Diversity and Climate Innovation](#), 2020.

46 SDC, [Guidance Sheet: Gender, Climate Change and Disaster Risk Reduction](#), 2019; CARE Climate Change and Resilience Information Platform, [Gender Equality](#), 2023; UN Foundation, [5 Facts about Gender Equality and Climate Change](#), 2022; UNDP & UN Women, [Gender Equality as an Accelerator for Achieving the SDGs](#), 2019; Deininger F. et al., [Placing Gender Equality at the Center of Climate Action](#), 2023.

Environmental protection and more sustainable use of natural resources

- In their caregiver roles – which are often related to the management of food, water and other natural resources – **women and girls** can develop **a thorough understanding of and specific knowledge about their natural resources and environment** different from those of men and boys. Providing women with access to economic and political spaces in which they can make use of this knowledge can strengthen the sustainable use of natural resources, protect the environment and drive forward green economic activities.⁴⁷
- Women can increase agricultural yields by 20–30% when provided the same resources as men. This contributes to food security and reduces stress on natural resources.⁴⁸

More inclusive Disaster Risk Reduction

The involvement of women in local climate action is not only linked to improved management of natural resources and stronger conservation efforts, but also to enhanced disaster preparedness. In Bangladesh, for example, women have played a key role in strengthening community resilience by actively contributing to disaster preparedness efforts. By ensuring that the sanitation and security needs of women are properly addressed, they have reduced the reluctance of women to use emergency shelters. Utilising women’s capacities, knowledge and skills in disaster risk reduction benefits everybody.⁴⁹

Figure 3: Benefits of gender equality for C/D/E



47 ILO, [Gender Equality and Green Jobs, Policy Brief](#), 2015.

48 UN Women, [Why women are key to climate action](#), 2025; FAO, [The State of Food and Agriculture](#), 2011.

49 Deininger F. et al., [Placing Gender Equality at the Center of Climate Action](#), 2023; UNDRR, [Gender-responsive Disaster Risk Reduction](#). Policy Brief, 2022.

3. Key Areas for Action

The C/D/E risks pose a challenge to gender equality and have the potential to exacerbate existing vulnerabilities. Addressing C/D/E risks in a gender-blind manner further enhances discriminatory power relations and misses out on important opportunities to work towards sustainable development. Increasing gender equality has the potential to improve climate action, disaster risk reduction and environmental programming to the benefit of everyone. Advancing gender equality while achieving sustainable solutions to C/D/E risks calls for the integration of the perspectives of C/D/E risks and gender equality.

Awareness and risk assessment

- Strengthen decision makers' awareness that C/D/E risks and gender inequality are **mutually reinforcing**, and that gender-transformative decision-making not only improves gender equality but also benefits the whole of society.
- Assess C/D/E impacts and risks from a gender perspective and conduct context-specific **(intersectional) gender impact and risk assessments**. These assessments should include the analysis of norms, roles, responsibilities, and capacities; a description of how the various hazards and risks affect different population groups differently; and the identification of opportunities for action. The selected actions should reflect an understanding of the gendered impact of the measures to be taken, and should consider how to transform harmful gender norms when implementing them.⁵⁰
- Collect **disaggregated data and gender statistics** on climate change, disaster risk reduction and environmental degradation during these assessments and throughout the implementation cycle of programmes. Special attention to gender differences in vulnerability and adaptive approaches will enable the assessment of programmes, enhance the capacity of policymakers, and boost women's and girls' specific contributions to environmental conservation and climate change mitigation and adaptation.

Capacities and access

- Raise the awareness and strengthen the capacities of women and groups of different genders to address C/D/E risks in order to foster their own **preparedness, prevention, and resilience**. Greater self-reliance can unleash the potential for acting as agents of change⁵¹ and can help secure any gains in gender equality.
- In addition to treating the symptoms of women's and girls' **greater vulnerability**, address the causes, which are often structural. Progress in this area will lead to greater resilience of society as a whole.⁵²
- Work towards **equal access to and rights over important resources and productive assets**, such as land, food, water, technology, energy, infrastructure, health services, employment, the digital space, insurance, financial services, information and education. Access ensures that women's expertise regarding these resources is available to use in supporting greater food security, renewable energy, and fairer, more resilient sustainable systems for all.⁵³
- Make use of **windows of opportunity opened by C/D/E risks**. If women are forced to take more responsibility at the household level because men have migrated, for example, support them in working towards a sustainable change of discriminatory patterns of power and authority in communities, and raise the awareness of returning men in an effort to prevent former practices and patterns from returning.

50 see FEPS/Friedrich Ebert Stiftung, [Climate Mainstreaming: Climate and Gender Policy](#), Policy Brief, February 2023.

51 see, e.g., GEF, [Climate change and women: impacts compounded by gender inequality](#), 2016.

52 FEPS/Friedrich Ebert Stiftung, [Climate Mainstreaming: Climate and Gender Policy](#), Policy Brief, February 2023

53 See also the [Thematic Integration Brief on Governance and C/D/E](#) which highlights the importance of good governance in the natural resources sector in order to prevent corruption.

Policies, decision-making and participation

- Include the nexus of gender and C/D/E in all relevant global standards. All C/D/E policy should be at least gender sensitive but ideally gender responsive or even transformative.⁵⁴
- Make sure that policy frameworks and programmes align with **international commitments**, such as the [Paris Agreement](#), the [Lima Work Programme on Gender](#) or the [Sendai Framework for Disaster Risk Reduction](#).
- Advocate for more **inclusive and meaningful participation** of women in C/D/E decision-making and environmental policymaking. Such participation can transform patriarchal systems that perpetuate inequality into systems that offer opportunities to overcome these inequalities.⁵⁵
- Advocate for more climate finance directed at women and girls to enable them to have their perspectives and needs inform actions taken against C/D/E risks.⁵⁶

Programming

- Ensure **all C/D/E programming is based on a thorough gender analysis** using gender-disaggregated data, and decide whether the programme should be gender sensitive, which is the minimum requirement, gender responsive or gender transformative. Existing resources, such as the SDC [Guidance on Mainstreaming Gender in Project Cycle Management](#), the Guidance on [How to Do a Gender Analysis](#), or the [DAC gender equality policy marker](#) can help determine the appropriate level.
- To identify the C/D/E-related risk of programmes and projects related to gender equality and to address these risks, use **established handouts and procedures**, such as the SDC [CEDRIG](#) tool, Environmental Impact Assessments (e.g. [EU](#) and [CH](#)), Climate Risk Assessments (e.g. [EU](#) and [GIZ](#)), or the World Bank [Climate and Disaster Risk Screening](#).
- Strengthen the gender-climate nexus in all sectors of development programming with the Australian Government's [handbook for developing inclusive program outcomes that address the intersection of gender equality and climate change](#).
- Ensure that all **partners** have the necessary regulations in place to ensure that your programmes are gender responsive, or even transformative.

Further reading

Deininger F., Woodhouse, A., Kuriakose, A. T., Gren, A., Liaqat, S., [Placing Gender Equality at the Center of Climate Action](#), World Bank group gender thematic policy notes series: issues and practice note, 2023.

FEPS/Friedrich Ebert Stiftung, [Climate Mainstreaming: Climate and Gender Policy](#), Policy Brief, February 2023.

OECD, [The Gender Equality and Environment Intersection: An overview of development cooperation frameworks and financing](#), 2023.

United Nations Office for Disaster Risk Reduction, [Gender-responsive Disaster Risk Reduction](#), Policy Brief, 2023.

54 OECD, [Building the Evidence Base and Advancing Policy Actions to Achieve the SDGs](#), 2022.

55 FEPS/Friedrich Ebert Stiftung, [Climate Mainstreaming: Climate and Gender Policy](#), Policy Brief, February 2023.

56 CARE Climate Change and Resilience Information Platform, [Gender Equality](#), 2023.

Good practices and examples of SDC work on gender and C/D/E

- Through its support to the [EnDev](#) programme, Switzerland has enabled over 12.9 million women and girls to access energy, thereby improving health, saving time, and increasing incomes, while creating employment for 72,000 women in MSMEs.
- In the Mekong Region, the [Inclusive Water Governance Project](#) empowers marginalised women to play leadership roles in water resources governance and policy decisions.
- Similarly, the [PASEM](#) programme in Mali strengthens resilience among pastoralists, with targeted support for women and youth in livestock value chains, contributing to conflict prevention and economic recovery.

Imprint

Publisher:

Federal Department of Foreign Affairs FDFA

Swiss Agency for Development and Cooperation SDC

Section Climate, DRR & Environment

Co-Authors:

Nora Schmidlin, INFRAS

Myriam Steinemann, INFRAS

Jacqueline Schmid, former Sector Policy Advisor C/D/E

Laurence von Schulthess Rechberg Hinavako, Programme Officer

Daniela Buchmann, Programme Officer

André Wehrli, Sector Policy Advisor C/D/E

Design:

Zoï Environment Network

2026 / © SDC